



# 2016 Rental Information & Rate Schedule

## Sequanota Lutheran Conference Center and Camp

**Mailing Address:**  
 PO Box 245  
 Jennerstown, PA 15547

**Physical Address:**  
 368 Sequanota Road  
 Boswell, PA 15531

**Phone: (814) 629-6627    contact@sequanota.com    www.sequanota.com**

**Sequanota** is nestled in the Laurel Highlands of south central Pennsylvania. We welcome all faiths, schools, nonprofits, organizations, and more to our beautiful 390 acres of woods, trails, and open fields by providing a quiet setting away from the busy-ness of daily life. Sequanota hosts retreats, meetings, reunions, training workshops, and team building activities.

### **Bowersox Enrichment Center: Year-round facility.**



**Capacity: 44.** 19 rooms, most with two twin beds. 4 of the larger rooms have more beds per room. All rooms have a private bath. Linens and towels provided. Three meeting room options with wireless internet available and a lounge/game room.

All rates are based on a per person charge. A one-time heating fee of \$125 will be added Nov. 1 – March 31. The minimum reservation total is \$750 or 15 persons for 1 wing.

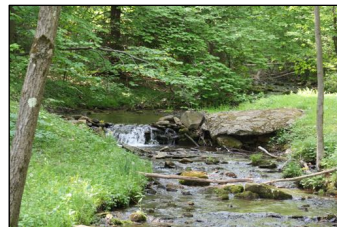
**Weekend Rates: Double Occupancy - First night: \$49, Additional nights: \$39.** Add \$20 per night for single occupancy. Preference is given to groups staying two nights.

**Weekday Rates:** Double occupancy: \$39, Single occupancy: \$49.

### **Shelter and Tent Camping: Seasonal primitive facility.**

Two lean-to shelters sleep 6 - 8 per shelter. Includes a fire ring, picnic tables, and tent sites.

**Camping rates:** \$10 per shelter or tent site.



**Rustic Cabins: Seven year-round cabins and eight three-season cabins** sleep 12 people in bunk beds. Each cabin has two baths with showers. Smaller groups have use of Faculty Lodge for meeting and cooking. Groups over 30 may use the dining hall (for an additional fee if heat is required).

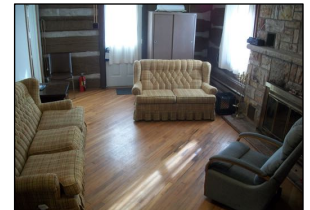


**Cabin Rates: \$20 per night per person (\$17 without heat).** \$100 minimum fee per cabin.

### **Director's Cabin: Year-round facility.**

Sleeps six in two rooms: 1 queen bed; 1 double and 2 single bunks. Includes living room with fireplace, kitchen and bath.

**Cabin Rate: \$80 for 2 persons per night.** \$10 per night for each additional person. Linens provided. Fully furnished kitchen.



**Picnic Pavilions:** Two open-air picnic shelters each with a fireplace, electricity, water, and a port-a-john.

**Day Rental:** Large - \$50; Small - \$25.

**Facility:** Sequanota can accommodate groups up to 200 people. Included in your rates are lodging, meeting rooms, use of AV equipment, white board/markers, coffee/tea, sports fields and equipment, campfire, and picnic tables.

**Meeting Areas:** We have a variety of spaces and styles (5 - 200 people, day use fees range from \$50 - \$250 based on the space, group size, and setup). Free use of our AV equipment is provided when reserved in advance. LCD projectors and wi-fi are available for rental.

**Recreation:** Activities and recreation areas include: campfire areas, sports fields, sand volleyball, basketball, four-square, sled riding hills, XC skiing, hiking, challenge course, and climbing tower.

**Water activities** include swimming at the outdoor pool with lifeguard supervision at \$50/hour and canoe rental on the reservoir with lifeguard supervision at \$50/hour. **Must be booked in advance.**

**Dining:** Meal service is available for both day-rental and overnight groups. Kid-friendly and special banquet meals can be arranged in advance. A kitchen usage fee will be added for overnight groups with no meal service.

Meal	Fee/person
Breakfast	\$6.00
Lunch	\$8.00
Dinner	\$10.00
*ages 3-10 half price	

## **Faith: nurtured & lived**

Cost savings Family Plans are available for parent and child events.